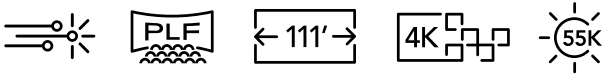


## CP4450-RGB

Premium large format auditoriums | Advanced format cinema | Event cinema

**World's first advanced format cinema projector featuring Christie RealLaser™ technology for screens up to 111 feet wide**



### Key features:

- › **Hyper realism** - new system architecture that displays content without motion blur and artifacts
- › **Ultra-fast processing** - HDMI 2.0 and 4x 12GB SDI inputs for 1.06G pixels per sec
- › **PLF performance** - brightest direct-coupled RGB laser cinema projector
- › **Long-lasting light source** - over 50,000 hours of optimal performance
- › **Low maintenance** - sealed optics for protection against dust ingress
- › **Best-in-class operational efficiency** - 10.5 lumens per watt

CHRISTIE  
RealLaser™

Advanced laser light source for accurate reproduction of DCI content

CineLife+™

Adds ultra high frame rate providing each eye 2K 120fps, 4K 120fps, 4K 3D 60fps

### TEMPERATURE CONTROL

External liquid cooling for optimal thermal efficiency



## Specifications

## Christie CP4450-RGB

<b>Brightness</b>	nominal	• Up to 55,000 lumens with HB lens, 42,000 lumens with UHC lens
	lifetime	• >50,000 <sup>1</sup>
<b>Contrast ratio</b>		• Up to 6000:1 full on/off with UHC lens, 2000:1 with standard HB lens
<b>Digital micromirror device</b>		• 1.38" Enhanced 4K 3-chip DMD DLP Cinema <sup>®</sup> • 4096x2160 (4K)
<b>Color gamut</b>	native gamut	• >95% Rec 2020 coverage
<b>Processing electronics</b>		• Christie <sup>®</sup> CineLife+™ Series (Series-2 IMB compatible) <sup>2</sup> • HDMI 2.0 x2 • 4K120 fps <sup>3</sup> • 1G Ethernet x1 • 12G SDI x 4 • DisplayPort 1.2 x2 • SFP+ x1 • QSFP+ x 1r
<b>Lens mount configuration</b>		• Fully motorized Intelligent Lens System (ILS™)
<b>Lenses</b>		• HB and UHC: 0.9:1 (HB) / 1.13-1.66 / 1.31-1.85 / 1.45-2.17 / 1.63-2.71 / 1.95-3.26 / 2.71-3.89
<b>Power input requirements</b>		• Input A and Input B: 200-240 VAC @ 50-60Hz, 16A max each • UPS Input: 200-240 VAC @ 50-60Hz, Single phase, 10A max • Chiller: 200-240 VAC @ 50-60Hz, 20A max
<b>Power consumption</b>		• 5450W including chiller, max DCI brightness, @25°C 18,600 BTU/hr
<b>Heat extraction</b>		• No heat extraction necessary. CFM requirements when used: • Projector 350 CFM min • Chiller 1340 CFM min
<b>Laser class</b>		• Class 1 – Risk Group 3
<b>Noise level</b>		• <70 dBA @ 25°C
<b>Environment</b>		• Ambient temperature: 15-30°C • Humidity (non-condensing): 20-80% • Altitude: <3000 m
<b>Dimensions (w/o lens)</b>	size (LxWxH)	• Projector head: 61.1x28.0x22.0" (1551.1x710.6x559.6mm) • Projector pedestal: 53.9x29.8x29.1" (1369.8x756.0x739.4mm)
<b>Weight</b>		• Projector head: 385lbs (175kg)
<b>Chiller dimensions</b>		• (LxWxH): 26.38x18.5x35.0" (670x470x890mm); 202lbs (92kg) • Chiller hose: 33ft (10m)
<b>Accessories</b>		• Rack mount pedestal • 50Hz chiller • 60Hz chiller • Chiller setup kit plumbing • Coolant <sup>4</sup> • Chiller setup kit ducts

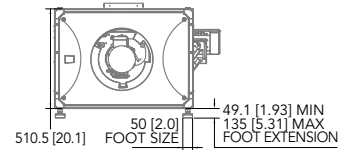
<sup>1</sup> Subject to variables specific to each installation. Please see Christie's laser best practices guide for more information.

<sup>2</sup> Supports legacy Series 2 IMBs. A list of supported versions is available upon request.

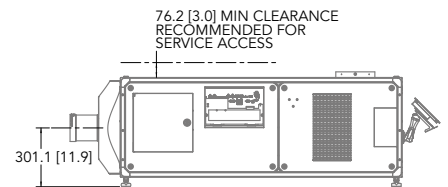
<sup>3</sup> With the GDC SR-6400 IMB.

<sup>4</sup> 10L bottle of 702 coolant. Requires 3 bottles per projector.

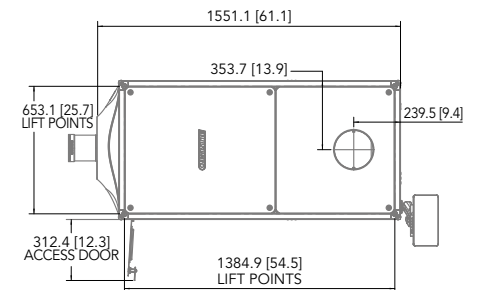
## Front view



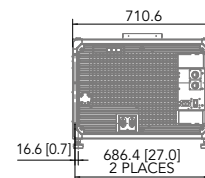
## Side view



## Top view



## Back view



### Corporate offices

Christie Digital Systems USA, Inc.  
Cypress  
ph: 714 236 8610  
Christie Digital Systems Canada Inc.  
Kitchener  
ph: 519 744 8005

### Worldwide offices

Australia  
ph: +61 (0) 7 3624 4888  
Brazil  
ph: +55 (11) 2548 4753  
China (Beijing)  
ph: +86 10 6561 0240  
China (Shanghai)  
ph: +86 21 6030 0500  
Colombia  
ph: +57 (318) 477-3179

Germany  
ph: +49 221 99 512-0  
India  
ph: +91 (080) 6708 9999  
Mexico  
ph: +52 55 4744 1790  
Singapore  
ph: +65 6877 8790

South Korea  
ph: +82 2 702 1601  
Spain  
ph: +34 91 633 9990  
United Arab Emirates  
ph: +971 (0) 4 503 6800  
United Kingdom  
ph: +44 (0)118 977 8000  
United States (Arizona)  
ph: 602 943 5700

### Independent sales consultant offices

Italy  
ph: +39 (0) 2 9902 1161  
Russia  
ph: +7 (495) 930 8961

For the most current specification information, please visit [christiedigital.com](http://christiedigital.com)

Copyright 2021 Christie Digital Systems USA, Inc. All rights reserved. All brand names and product names are trademarks, registered trademarks or tradenames of their respective holders. "Christie" is a trademark of Christie Digital Systems USA, Inc., registered in the United States of America and other countries. DLP<sup>®</sup> and the DLP logo are registered trademarks of Texas Instruments. Performance specifications are typical. Due to constant research, specifications are subject to change without notice.  
CD2028\_Christie CP4450-RGB\_Datasheet\_June-21\_EN



# CHRISTIE<sup>®</sup>